



ALB  
STYLE 600  
'DAVID'  
\$250



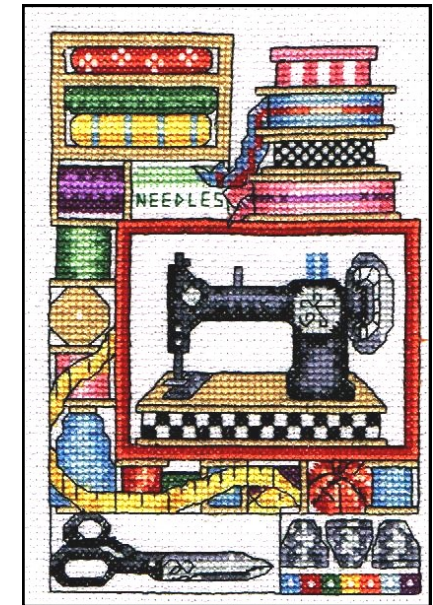
**Men's and women's silk stoles**

\$185 each  
\$740 for a set of four  
Individual designs from \$250

**Dream**  
*Stitches*



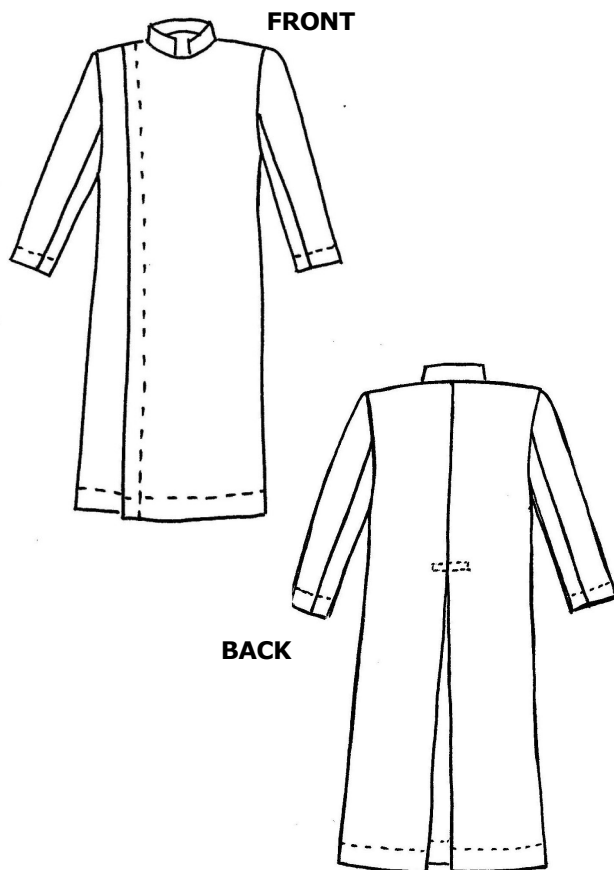
## Migrant and Refugee Women's Sewing Program Inc.



## Liturgical Garments for Men



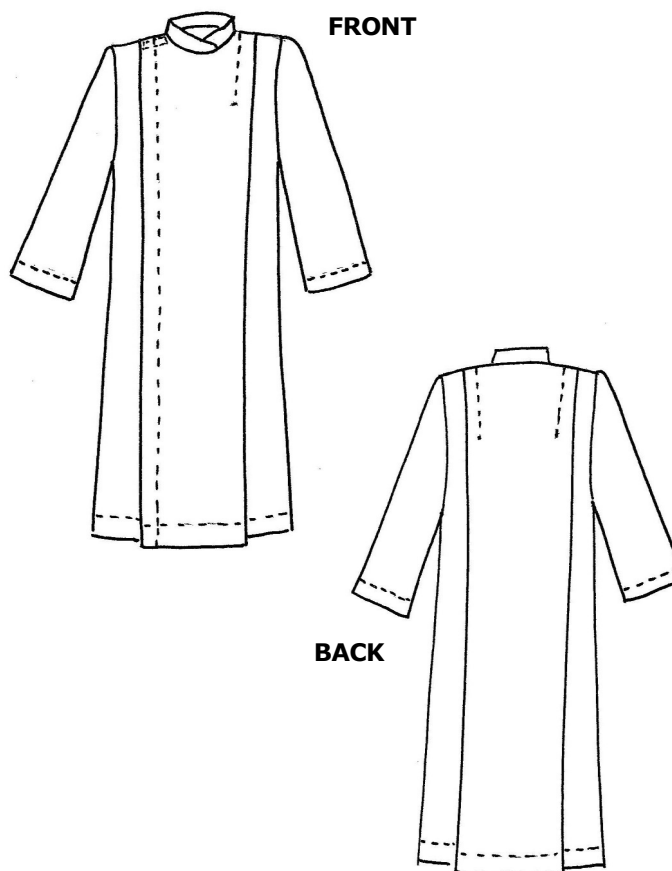
### Style 500 'ADAM'



**Cassock**

- Stand collar with front gap
- Two piece narrower sleeve
- Centre back inverted pleat
- Velcro or button fastening
- Machine Washable Poly/Viscose Fabric
- Available in Black

### Style 600 'DAVID'



**Cass/ALB**

- Crossover collar
- One piece wider sleeve
- Knife pleats in front and back
- Velcro or button fastening
- Machine Washable Poly/Viscose Fabric
- Available in White



SARUM  
SURPLICE  
\$180



CASSOCK  
STYLE 500  
'ADAM'  
\$250.00



## ORDER FORM

Name.....  
 Address.....  
 .....P/Code.....  
 Phone: Home .....  
 Mobile.....  
 Email.....

Style	Price inc. GST	Black or White	Your order (please tick)
No. 500 'ADAM'	\$250		
No. 600 'DAVID'	\$250		
<i>Postage and handling:</i>			
Within Victoria	\$15.85		
NSW and SA	\$19.75		
Tas and Qld	\$22.90		
WA	\$35.50		
Postage and handling Total cost			\$

PAYMENT ON COMPLETION BY CHEQUE, CASH OR  
BANK TRANSFER TO:

Dream Stitches Inc.  
 BSB 633-000  
 A/c No. 159 828 433

Order forms to: 10 Surrey St  
 Box Hill South VIC 3128  
 or info@dreamstitches.org.au

[www.dreamstitches.org.au](http://www.dreamstitches.org.au)

## ORDER FORM

Name.....  
 Address.....  
 .....P/Code.....  
 Phone: Home .....  
 Mobile.....  
 Email.....

Style	Price inc. GST	Black or White	Your order (please tick)
No. 500 'ADAM'	\$250		
No. 600 'DAVID'	\$250		
<i>Postage and handling:</i>			
Within Victoria	\$15.85		
NSW and SA	\$19.75		
Tas and Qld	\$22.90		
WA	\$35.50		
Postage and handling Total cost			\$

PAYMENT ON COMPLETION BY CHEQUE, CASH OR  
BANK TRANSFER TO:

Dream Stitches Inc.  
 BSB 633-000  
 A/c No. 159 828 433

Order forms to: 10 Surrey St  
 Box Hill South VIC 3128  
 or info@dreamstitches.org.au

[www.dreamstitches.org.au](http://www.dreamstitches.org.au)

## ORDER FORM

Name.....  
 Address.....  
 .....P/Code.....  
 Phone: Home .....  
 Mobile.....  
 Email.....

Style	Price inc. GST	Black or White	Your order (please tick)
No. 500 'ADAM'	\$250		
No. 600 'DAVID'	\$250		
<i>Postage and handling:</i>			
Within Victoria	\$15.85		
NSW and SA	\$19.75		
Tas and Qld	\$22.90		
WA	\$35.50		
Postage and handling Total cost			\$

PAYMENT ON COMPLETION BY CHEQUE, CASH OR  
BANK TRANSFER TO:

Dream Stitches Inc.  
 BSB 633-000  
 A/c No. 159 828 433

Order forms to: 10 Surrey St  
 Box Hill South VIC 3128  
 or info@dreamstitches.org.au

[www.dreamstitches.org.au](http://www.dreamstitches.org.au)

## Your measurements

To obtain the best fit, please fill in your measurements in the chart below. Your garment will then be cut to order using these measurements.

If you would prefer to be personally measured please **phone 9878 3292** to arrange an appointment.

*Please allow 6–8 weeks for your order to be delivered to you.*

	Centimetres
<b>Chest</b> —at underarm around the body	
<b>Waist</b> —at waistline around the body	
<b>Shoulder Line</b> —from shoulder to shoulder across back of the neck	
<b>Across Back</b> —from armhole to armhole at shoulder blade	
<b>Arm Circumference</b> —around top of arm at widest part	
<b>Sleeve Length</b> —from centre back neck, across shoulder line, down top of sleeve to sleeve length	
<b>Length</b> —two measurements: 1. <b>Front</b> from shoulder at neck, down to finished length	
2. <b>Back</b> from centre back neck down to finished length	

## Your measurements

To obtain the best fit, please fill in your measurements in the chart below. Your garment will then be cut to order using these measurements.

If you would prefer to be personally measured please **phone 9878 3292** to arrange an appointment.

*Please allow 6–8 weeks for your order to be delivered to you.*

	Centimetres
<b>Chest</b> —at underarm around the body	
<b>Waist</b> —at waistline around the body	
<b>Shoulder Line</b> —from shoulder to shoulder across back of the neck	
<b>Across Back</b> —from armhole to armhole at shoulder blade	
<b>Arm Circumference</b> —around top of arm at widest part	
<b>Sleeve Length</b> —from centre back neck, across shoulder line, down top of sleeve to sleeve length	
<b>Length</b> —two measurements: 1. <b>Front</b> from shoulder at neck, down to finished length	
2. <b>Back</b> from centre back neck down to finished length	

## Your measurements

To obtain the best fit, please fill in your measurements in the chart below. Your garment will then be cut to order using these measurements.

If you would prefer to be personally measured please **phone 9878 3292** to arrange an appointment.

*Please allow 6–8 weeks for your order to be delivered to you.*

	Centimetres
<b>Chest</b> —at underarm around the body	
<b>Waist</b> —at waistline around the body	
<b>Shoulder Line</b> —from shoulder to shoulder across back of the neck	
<b>Across Back</b> —from armhole to armhole at shoulder blade	
<b>Arm Circumference</b> —around top of arm at widest part	
<b>Sleeve Length</b> —from centre back neck, across shoulder line, down top of sleeve to sleeve length	
<b>Length</b> —two measurements: 1. <b>Front</b> from shoulder at neck, down to finished length	
2. <b>Back</b> from centre back neck down to finished length	